

Ann Arbor Orchid Society Newsletter

April 10 Speaker Ron Ciesinski Taylor Orchids

We are very fortunate to have nabbed a great speaker for April. Our very own Ron Ciesinski of Taylor Orchids will be explaining the best way to repot our orchids.

The Toledo Blade wrote a wonderful article about Ron in it's February 12, 2011 issue, with a lovely slide show. Not as good as a trip to Monroe and Taylor Orchids' greenhouse, but almost!

To see the article, go to the Toledo Blade website and search on Ron Ciesinski. Click on Natural Beauties. You will love it.

Ron not only has years of experience, but also has many AOS cultural awards that show his growing expertise. Come ready to take notes and buy a few plants, too!

President's Message

We have a very special treat this month. Long-time orchid grower Ron Ciesinski of Taylor Orchids will be here speaking on repotting and culture. Ron is one of the great characters in the orchid world, lots of orchid knowledge and fun stories will be coming our way. Ron will also have orchids for sale.

The Festival was another big success, with an attendance of 1500 people or more. We had volunteer help from many new members, as well as a couple we have not seen in a while. The vendors did very well, and were very grateful for our show and hospitality.

The Great Lakes Judging Center's annual seminar will be June 18 & 19, primarily at Washtenaw Community College. This year's topics are Pleurothallids and Cymbidiums. There will be several talks, and orchid plants for sale and auction. There is no charge to attend the lectures, we do ask that you register to let us know you are planning to attend. See www.gljc.org for details.

We need help for our display at the MOS Palm Sunday Show. See Paige or Denise for more information. Set up for the show is on April 15 and tear down is the 17th. Please help! The show will be held at: The United Food & Comm. Workers Union Building, at 876 Horace Brown Dr, Madison Heights. 11am - 5 pm www.miorchids.com

In this Issue

April Speaker.....	1
President's Message.....	1
Fertilizer for sale.....	2
Slate of Officers.....	2
Thank you for Festival Food.....	2
Newsletter deadline.....	3
AAOS Calendar.....	3
Officers.....	3
Festival Display Report.....	4
Volunteer THANK YOU!.....	5
Growing in Expanded Clay Pellets.....	6
Photos from Festival (thanks to April Pedit).....	8
Membership Form.....	9

Fertilizer For Sale

Paige will be selling the new fertilizer by Plant Marvel that Ron Cieszewski is using at Taylor Orchids. Ron is getting fabulous new leaf growth with this formula. Let Paige know if you are interested in having her bring some to the meeting. Each one pound bag is \$5. There are two formulas by Plant Marvel available: 1. Nutriculture General Purpose 20-10-20 for growth. This is to be used March to Sept. It is "ideal for general feeding in low light situations." Use every week to 14 days. and 2. Super Start 12-45-10. This formula "promotes faster root development without burning." This encourages flowers and should be used Oct. thru Feb.

Each formula is used at a strength of 2 Tbl to 1 gal of water. Send Paige an email if you are interested (GEHartman1@msn.com)

Our Slate of Officers for 2011- 2012

President: Vivian Lin
Vice President: Riki Marquis
Secretary: Denise Nash
Treasurer: Abby Skinner
Director: Dwight Lewis
Director: Bob Desoff

We will vote for this slate of officers next meeting, on May 15.

Thank You For All the Festival Food

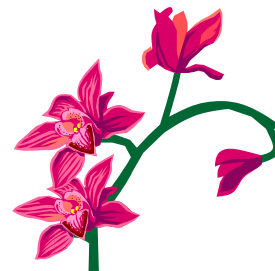
Once again, as always, the AAOS membership came through with the best potluck meals. Almost 30 people brought in food items throughout the weekend. We had plenty of food and supplies and everyone seemed to be very happy with the meals and snacks.

A special thank you to Marilyn Finkbeiner, Emma Edge, Jane Cather and Laura Duman for their work in the kitchen on Friday afternoon as all the food was arriving and for getting the dinner meal served on time. It's the biggest meal and takes the most effort. What a great team!!

Nancy Bennett helped all weekend --Saturday lunch, Sunday lunch and snacks. Judy Lobato came in so early Saturday morning and had the coffee brewing for the judges and helpers. She set out the entire breakfast. We've done this for several years, but each time we can depend on AAOS members for doing the best meals. I know the vendors appreciate all we give them and it all goes so smoothly.

Thank you so much for being the most dependable, the most generous and the most fun group to be with. We're all tired by the end of the weekend, but it all went so well. We need to be very proud!

- Paige



AAOS Calendar



April 10 Ron Ciesinski, Taylor Orchids. Orchid repotting, Culture and a Few Stories

April 15 Set up MOS Orchid Show

April 17 Tear down MOS Orchid Show

May 15 Leon Glicenstein - Some Native Orchids and Meat Eaters of Florida

September 11 Russ Vernon, Odontoglossums: **NOTE CHANGE IN DATE**

October 9 - Alex Challis - The Slippers of Venus

November 20 - Ernie Gemeinhart - Growing Orchids The EnLightened Way: Gardening Under Fluorescent Lights

December - Holiday Party, TBA

Jan 15, 2012 TBA

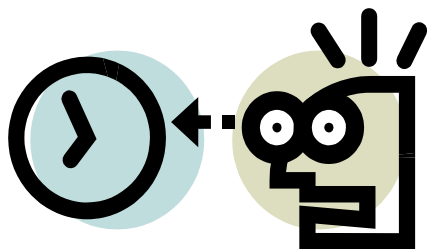
Feb 12, 2012 TBA

March 18, 2012 TBA

April 21-22 Festival

May 20, 2012 TBA

Sept 16, 2012 TBA



Newsletter Deadline

The next Newsletter deadline is May 7, 2011. Please contribute any orchid related articles to Denise Nash at djnash@comcast.net

Volume 19 Issue 4

Ann Arbor Orchid Society 2010-2011 Officers

President - Alex Challis 734-971-6186, IcePenguin@aol.com

Vice President - Vivian Lin, 734-741-1984, VHL@umich.edu

Treasurer - Abby Skinner 810-231-1741, skinne11@msu.edu

Secretary - Denise Nash 248-349-5482, djnash@comcast.net

Director - Bob Desoff 734-323-9729 r.desoff@ieee.org

Director - April Pedit, 734-646-0572 apedit@mac.com

Past President - Paige Hartman 734-864-3718 GEHartman1@msn.com

Hospitality Queen: Riki Marquis 248-486-1540 marquisdj@juno.com, and Vivian Lin

Reception Committee - Dottie Winter, 734-761-5859, harwin@umich.edu

Library - Duane Duman, George Parks. duman2@aol.com

Membership - Randy Long, 810-599-0384, Boomerj2@aol.com

Newsletter Editor - Denise Nash, 248-349-5482, djnash@comcast.net

Orchid Festival - *We Need your help!!!!*

Orchid Shows - Alex Challis, Paige Hartman, Denise Nash

Programs - Paige Hartman, Alex Challis

Publicity - Neal Foster

Ann Arbor Orchid Society Newsletter - The AAOS meets monthly from September through May (excluding December) at the University of Michigan's Matthaei Botanical Gardens, 1800 North Dixboro Road, Ann Arbor, MI. at 2:00 p.m., set up at 1:30. The AAOS Newsletter is published 8-9 times throughout the year, and is sent to all AAOS members. AAOS members and others are invited to submit articles or other information relating to orchids. The Ann Arbor Orchid Society is a 501(C)(3) educational and scientific organization, affiliated with the American Orchid Society, the Mid-America Orchid Congress, and with the Orchid Digest Corporation.

April 2011

Our Festival Display, March 19-20, 2011

The show season continued with our own AAOS Orchid Festival at MBG. We put up a grand 100 sq. ft. full island display. Alex Challis & Denise Nash were in charge of the display, with Paige Hartman (labels) Dottie Winter (staking and labeling) Harry Winter (names & registration) Randy Long, Abby Skinner, as well as the many members who were around to help, and who brought plants. The display used some of the garden "metalware" that we've used in previous displays. In all, 15 members exhibited about 50 plants, most of which were registered for judging. We won the first place ribbon in its class, AND the AOS show trophy! And also a trophy among the plants this year. Dottie Winter entered a cut flower arrangement and won a second place ribbon.

Trophies

AOS Show Trophy

Phalaenopsis Newberry Parfait 'Picotee'

First

Society Display, 100 sq. ft.
 Phalaenopsis Newberry Parfait 'Picotee'
 Guaritonia (Cattletonia) Why Not
 Tolumnia Orchidom Happy Spots
Sarcoglottis metallica
Dendrobium moniliforme
Sophronitis coccinea
 Paphiopedilum (Jacardelo x [British Bulldog x World Famous])
 Doritaenopsis Purple Martin 'Champion'
Chamaeangis haritoniana
 Paphiopedilum Conco-bellatulum
 Paphiopedilum Toni Semple
Pleurothallis scabrilinguis
 Vanda Pat Delight 'Pink Tango'

Second

Phalaenopsis hybrid
 Wilsonara Tigersetta 'Wyld Court' AM/AOS
 Paphiopedillum Lathamianum
 Phalaenopsis Sogo Grape
 Dendrobium Roy Tokunaga
 Paphiopedilum Apple Blossom
Paphiopedilum haynaldianum
 Phalaenopsis Parakeet

Third

Cattlianthe Gold Digger 'Fuchs Mandarin'
 Colmanara Masai Red
 Doritaenopsis I-Hsin Sesame

Society Display

Linda Battison

AAOS
 Linda Battison
 Neal Foster
 Neal Foster
 Paige Hartman
 Glenn Lehr
 Glenn Lehr
 Vivian Lin
 Riki Marquis
 Denise Nash
 Denise Nash
 Denise Nash
 Denise Nash
 Denise Nash

Jack Edge
 Neal Foster
 Vivian Lin
 Randy Long
 Riki Marquis
 Denise Nash
 Denise Nash
 Abby Skinner

Neal Foster
 Paige Hartman
 Janet Hinshaw

Continued on Page 5.

Our Festival display report, cont.

Maxillaria (*tenuifolia* x *sanguinea*)
Maxillaria tenuifolia
Paphiopedilum Robinianum
Tolumnia Jairak Rainbow 'Pink'

Riki Marquis
Denise Nash
Denise Nash
Denise Nash

Duane & Laura Duman, Emma Edge, Debbie Heckler, Harry & Dottie Winter, and Cynthia Yao also contributed plants to the display. The show season will conclude next month with the MOS show, April 17-18, at its new venue, the United Food & Commercial Workers Union Building, 876 Horace Brown Dr., Madison Heights (South of 13-Mile just east of I-75). Thanks to all who contributed plant as well as their time and effort to make our display, and the entire Festival, a success! – Harry Winter

Thank You to the following people for volunteering and helping with the Festival activities:

Kathleen Stevenson	Monica Milla	Linda Ridley	Robin Johnson	Neal Foster
Marilyn Finkbiener	Kathy Cole	Larry Walton	Gayle Ford	Dwight Lewis
Heather McLeod	Riki Marquis	Linda Battison	Cynthia Yao	Denise Nash
Deborah Heckler	Jane Cather	Jim Cather	Janet Henshaw	Judith Labato
Bob Desoff	Amy Bruhn	Duane Duman		

I want to give a very special thanks to the following for taking on extra shifts (that you never signed up for):

I couldn't have done it without you :)

Larry Walton (all the shifts you took)	Linda Ridley	Robin Johnson
Riki Marquis	Janet Henshaw	Celina Pedit
Jim and Jane Cather	Bob Desoff	Linda Battison
Gayle Ford		

An Extra thank you to those from other societies for clerking:

Norm Chris Garling Ritch Deb Patty Eileen

I apologize if I have missed your name and want you to know how much all the help we received is greatly appreciated. Thank you to Paige who always does an excellent job on the food coordination.

Thank you, April Pedit

Many thanks to Judy and Heidi for this wonderful article about growing in expanded clay pellets....~Denise

Growing In Expanded Clay Pellets

I am interested in growing in media that does not break down. That way I can save both time and money. I also like the idea of not using a product that may not be the best thing for the earth. For example, are we depleting the earth's supply of sphagnum moss? At the Christmas party at Heidi Jacobus' house, once again I saw her well grown plants. The following is a reply to an email I sent her asking what plants she grows in the clay pellets and how she actually goes about it.

Judy Lobato

I have had really good results with the clay pellets, literally the best in 10 years of growing. I haven't converted everything over yet, but what I have seems to be thriving. I do let the plants sit with water constantly in the bottom reservoir. Generally taller pots rather than squatter pots work well - and saves on pellets. I've gone to Target and bought plastic tableware "glasses" and electric-drilled the requisite holes. It doesn't seem to matter about the outside pot so long as it is deeper than the inside pot's holes. Aesthetically, I like the outer pot to be as tall as possible. Sometimes I can't find a good fit so end up with something that looks like a deep cereal bowl as the outer pot. I've also gotten second hand store ceramic vases or pots of a good shape but ugly color and spray painted them. I'm also using squared (name brand) "Rand" pots which have good open access to the bottom water, not exactly like the holes just on the side, but it doesn't seem to matter which I use, prescribed height holes or Rand pots. Rand pots are expensive but they seem to be perfect for this application.

For inner plastic pots (thin plastic) I use a drill (electric) with a large enough bit and just drilled 2 or 3 close holes about an inch from the bottom. It took some trial and error. Yes, some broke apart because I drilled the holes too close. I of course advise everyone to take all safety precautions. Another, less desirable, way to make the holes in plastic is to heat up a soldering iron and melt holes. The fumes are very bad so take care. I prefer the electric drill method. The pots our speaker sold were just thin deli-take out containers with 2 or 3 holes drilled in. Nothing "special" about those pots, but they come pre-drilled.

Several times, I've had the reservoirs dry out completely (though I am not sure if the pellets inside would have been 100% dried out) and I just quickly rewater and there seems to have been no damage. (Not that I am recommending that level of neglect.) I do get some white precipitation in the reservoir pots, it seems to do no great harm except aesthetics. I don't know whether it is from fertilizer in the RO water or the unfiltered water well water or left over epsom salts from the pre-treatment.

I have a couple of non-orchids in pellets. One is a sage (herb) plant, actually yanked from my kitchen garden, cleaned off and plunked in. The sage is doing great. The chives were too delicate and withered.

Continued on page 7.

Growing in Expanded Clay Pellets, cont.

It's just fine to have the height of the outside pot practically the same as the inside one, as long as the only holes at the bottom of the interior pot provide all the water from below, not overflowed from the top. The water wicks up just fine - it is so opposite of everything I'd learned about overwatering. The air spaces between pellets must maintain themselves with spacings, even if the outer pot is constantly filled.

I have the advantage of a bottom heated (radiant heat) tile floor and I can vouch that makes a HUGE difference in getting a newly repotted orchid established. Ray had suggested "seedling heat mats". Of course then the water dries out faster with the heat but the results are great. I had some warmer "lanes" in the tiled floor where the pipes ran. I saw the difference clearly and rotated plants over the warmer sections and they established fantastically well.

I use RO water, sometimes just plain RO, sometimes with a tiny bit of MSU fertilizer and sometimes adding a drop of SuperThrive (I computed it out once as about a tenth of a teaspoon of MSU to my gallon Hawes watering pot so I have been "winging it.") I don't have a proportionate automatic dosage device, but using the (weak which I'll define as about 1/10th diluted from normal "weak") fertilizer water seems to work well. My fertilizing regime is not as meticulous as it could be...

I have done a thorough catchepot (outer reservoir pot) cleaning only once in the past 3 months. Sometimes algae is a problem, but opaque pots help a lot. I have spraypainted both clear plastic and ceramic or metal decorative pots with a neat product -- a Krylon spray paint that "sticks to everything" plastic, glass, etc. (it is marked well on the label and available at Lowe's or Ace, I'd imagine wherever there is a good supply of spray paint. You'll know because it costs a dollar or two more than the rest of the paint. I've used both the matte and the semi-matte and I like the effect. I prefer having the inner pot clear and the outer pot opaque black.

I started out by emptying the water out before rewatering but got complacent so don't now. My repotted plants from bark mix at first had a significant, ugly, mud-diness/ dirtiness in the run-off water. It is to be expected. No matter how well washed the plant was, it took multiple waterings to clear the run off water. It took several weeks once clear it has stayed clear, as you'd expect. Be patient.

I don't have any experience with different sized pellets I bought his normal sized pellets, whatever he was selling. It is important that the pellets not be widely "mixed" sizes or they will pack down. I'm reserving judgment on which types of orchids do better. So far it is an across the board good thing. I just don't have enough experience with what doesn't work as well. I did find that my dendrobiums did just fine whereas Ray said he didn't have luck with them. Again, counter-intuitive.

Continued on page 8.

Growing in Expanded Clay Pellets, cont.

In summer, I will put my plants outside, so I think the pelleted plants will have advantages -- first of all, a heavier weight so they don't tip, and I can just let it rain, just as long as the outer reservoir pot is not taller than the inner pot.

I'm pleased with the results, and plan to continue transplanting more orchids as they need. About 1/3 of my collection is now in pellets. Of course, I only transplanted those orchids that were ready with new roots, those I might have transplanted anyway at that point. Now I'm stuck and can't transplant any more because I need to order more pellets!

You should know that the pellets are covered with a very fine-red-dust and required an elaborate set of soaks and rinses over several days to get them clean enough and hydrated to use. I did this project at the scale of a whole bag at a time, outdoors, using a garden hose and big buckets, spaghetti strainers for sieves, contended with run-away pellets that floated to the top and ran off into the garden. A real mess. So be forewarned if you do this large scale and experiment with your set-up. I'd forgotten (suppressed) that start up process was till now. Fortunately, it is only done once.

Heidi Jacobus



Dotties Arrangement



AAOS Display from Festival 2011

Ann Arbor Orchid Society Membership Form

Name:

Address:

City/State/Zip:

Phone (Home):

Phone (Work):

E-mail:

_____ Individual (\$20)

_____ Senior Individual (\$15)

_____ Household (\$25)

_____ Senior Household (\$20) Senior rates apply for those 70 and over.

An extra donation is suggested if your newsletter is to be mailed rather than emailed to you. Your donation will help cover the extra cost of printing and mailing your copy. Please place donations in the box on the hospitality table. Thank you for your cooperation.

New Membership

Renewal

New Address

Beginner

Advanced Grower

Commercial Grower

What is your growing environment?

Greenhouse

Artificial lights

Windowsill

Other _____

Would you like to receive you newsletter via email only? Yes No